

Ball caster / ball transfer units tables



On request, we can supply ball caster tables / ball transfer units tables adapted to your individual requirements.

We usually use sheet metal panels, which are manufactured, edged and welded on all sides, in accordance with your size specifications.

The standard table models are galvanised, but can also be supplied with powder-coated surfaces in different RAL colours, in bright steel or stainless steel.

Ball caster spacing patterns are manufactured in accordance with your individual requirements.

We supply every size of table. In the case of surfaces larger than 2,000×3,000 mm, several table plates are put together to make one table. The ball casters / ball transfer units are mounted by means of press fitting and are easily replaceable. They can be mounted in rows or positioned alternately. We can supply tables with or without (height-adjustable) legs.

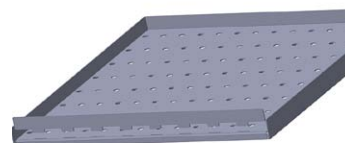
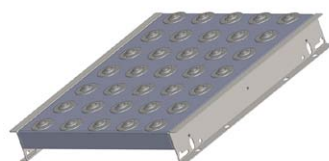
Our catalogue for standard tables you find here in „Downloads“!

So you'd like to "get something special rolling", but have questions about it!?

Please don't hesitate to contact us in person or to use our contact form – we're always happy to advise you!

Ordering information

- Table size, material, surface
- Ball caster type, spacing, distance from the edge
- Bearing capacity
- Smallest surface of the material to be transported, as well as its composition
- Chamfered edges, upturned edges, guide bars, trusses
- Support frame (legs), fixed or height-adjustable

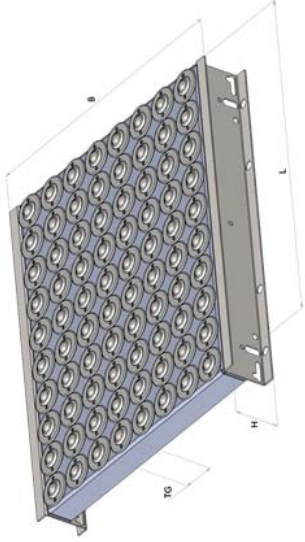




Schulz Stanztechnik GmbH
 Kruppstraße 12
 D 58553 Halver

Phone: +49 2353 903154
 Fax: +49 2353 903156
 info@schulz-stanztechnik.de

Ball caster / ball transfer units tables



Designation	Description / Dimensioning	Tablesize	Height U-Profile	Amount Ball caster
KRT/019.201/T50/500x400/70/Nz	Ball caster table 500x440, Division 50, galvanized with Ball caster 019.201 & U-Profile 70	500x400	70	80
KRT/019.201/T75/500x400/70/Nz	Ball caster table 500x440, Division 75, galvanized with Ball caster 019.201 & U-Profile 70	500x400	70	35
KRT/019.201/T100/500x400/70/Nz	Ball caster table 500x440, Division 100, galvanized with Ball caster 019.201 & U-Profile 70	500x400	70	20
KRT/019.201/T125/500x400/70/Nz	Ball caster table 500x440, Division 125, galvanized with Ball caster 019.201 & U-Profile 70	500x400	70	12
KRT/019.201/T50/1000x440/70/Nz	Ball caster table 1000x440, Division 50, galvanized with Ball caster 019.201 & U-Profile 70	1000x400	70	160
KRT/019.201/T75/1000x440/70/Nz	Ball caster table 1000x440, Division 75, galvanized with Ball caster 019.201 & U-Profile 70	1000x400	70	65
KRT/019.201/T100/1000x440/70/Nz	Ball caster table 1000x440, Division 100, galvanized with Ball caster 019.201 & U-Profile 70	1000x400	70	40
KRT/019.201/T125/1000x440/70/Nz	Ball caster table 1000x440, Division 125, galvanized with Ball caster 019.201 & U-Profile 70	1000x400	70	24
KRT/019.201/T50/500x540/70/Nz	Ball caster table 500x540, Division 50, galvanized with Ball caster 019.201 & U-Profile 70	500x500	70	100
KRT/019.201/T75/500x540/70/Nz	Ball caster table 500x540, Division 75, galvanized with Ball caster 019.201 & U-Profile 70	500x500	70	49
KRT/019.201/T100/500x540/70/Nz	Ball caster table 500x540, Division 100, galvanized with Ball caster 019.201 & U-Profile 70	500x500	70	25
KRT/019.201/T125/500x540/70/Nz	Ball caster table 500x540, Division 125, galvanized with Ball caster 019.201 & U-Profile 70	500x500	70	16
KRT/019.201/T50/1000x540/70/Nz	Ball caster table 1000x540, Division 50, galvanized with Ball caster 019.201 & U-Profile 70	1000x500	70	171
KRT/019.201/T75/1000x540/70/Nz	Ball caster table 1000x540, Division 75, galvanized with Ball caster 019.201 & U-Profile 70	1000x500	70	91
KRT/019.201/T100/1000x540/70/Nz	Ball caster table 1000x540, Division 100, galvanized with Ball caster 019.201 & U-Profile 70	1000x500	70	50
KRT/019.201/T125/1000x540/70/Nz	Ball caster table 1000x540, Division 125, galvanized with Ball caster 019.201 & U-Profile 70	1000x500	70	32
KRT/019.201/T50/500x640/70/Nz	Ball caster table 500x640, Division 50, galvanized with Ball caster 019.201 & U-Profile 70	500x600	70	99



Schulz Stanztechnik GmbH
Kruppstraße 12
D 58553 Halver

Phone: +49 2353 903154
Fax: +49 2353 903156
info@schulz-stanztechnik.de

Ball caster / ball transfer units tables

Designation	Description / Dimensioning	Tablesize	Height U-Profile	Anzahl Ball castern
KRT/019.201/T75/500x640/70/Nz	Ball caster table 500x640, Division 75, galvanized with Ball caster 019.201 & U-Profile 70	500x600	70	42
KRT/019.201/T100/500x640/70/Vz	Ball caster table 500x640, Division 100, galvanized with Ball caster 019.201 & U-Profile 70	500x600	70	30
KRT/019.201/T125/500x640/70/Nz	Ball caster table 500x640, Division 125, galvanized with Ball caster 019.201 & U-Profile 70	500x600	70	20
KRT/019.201/T50/1000x640/70/Nz	Ball caster table 1000x640, Division 50, galvanized with Ball caster 019.201 & U-Profile 70	1000x600	70	209
KRT/019.201/T75/1000x640/70/Nz	Ball caster table 1000x640, Division 75, galvanized with Ball caster 019.201 & U-Profile 70	1000x600	70	104
KRT/019.201/T100/1000x640/70/Nz	Ball caster table 1000x640, Division 100, galvanized with Ball caster 019.201 & U-Profile 70	1000x600	70	60
KRT/019.201/T125/1000x640/70/Nz	Ball caster table 1000x640, Division 125, galvanized with Ball caster 0019.201 & U-Profile 70	1000x600	70	40
KRT/019.201/T50/500x790/70/Nz	Ball caster table 500x790, Division 50, galvanized with Ball caster 019.201 & U-Profile 70	500x750	70	126
KRT/019.201/T75/500x790/70/Nz	Ball caster table 500x790, Division 75, galvanized with Ball caster 019.201 & U-Profile 70	500x750	70	60
KRT/019.201/T100/500x790/70/Vz	Ball caster table 500x790, Division 100, galvanized with Ball caster 019.201 & U-Profile 70	500x750	70	40
KRT/019.201/T125/500x790/70/Nz	Ball caster table 500x790, Division 125, galvanized with Ball caster 019.201 & U-Profile 70	500x750	70	24
KRT/019.201/T50/1000x790/70/Nz	Ball caster table 1000x790, Division 50, galvanized with Ball caster 019.201 & U-Profile 70	1000x750	70	266
KRT/019.201/T75/1000x790/70/Vz	Ball caster table 1000x790, Division 75, galvanized with Ball caster 019.201 & U-Profile 70	1000x750	70	130
KRT/019.201/T100/1000x790/70/Nz	Ball caster table 1000x790, Division 100, galvanized with Ball caster 019.201 & U-Profile 70	1000x750	70	80
KRT/019.201/T125/1000x790/70/Nz	Ball caster table 1000x790, Division 125, galvanized with Ball caster 019.201 & U-Profile 70	1000x750	70	48
KRT/019.201/T50/500x550/110/Vz	Ball caster table 500x550, Division 50, galvanized with Ball caster 019.201 & U-Profile 110	500x500	110	100
KRT/019.201/T75/500x550/110/Vz	Ball caster table 500x550, Division 75, galvanized with Ball caster 019.201 & U-Profile 110	500x500	110	49
KRT/019.201/T100/500x550/110/Nz	Ball caster table 500x550, Division 100, galvanized with Ball caster 019.201 & U-Profile 110	500x500	110	25
KRT/019.201/T125/500x550/110/Nz	Ball caster table 500x550, Division 125, galvanized with Ball caster 019.201 & U-Profile 110	500x500	110	16
KRT/019.201/T50/1000x550/110/Nz	Ball caster table 1000x550, Division 50, galvanized with Ball caster 019.201 & U-Profile 110	1000x500	110	171
KRT/019.201/T75/1000x550/110/Vz	Ball caster table 1000x550, Division 75, galvanized with Ball caster 019.201 & U-Profile 110	1000x500	110	91
KRT/019.201/T100/1000x550/110/Nz	Ball caster table 1000x550, Division 100, galvanized with Ball caster 019.201 & U-Profile 110	1000x500	110	50
KRT/019.201/T125/1000x550/110/Nz	Ball caster table 1000x550, Division 125, galvanized with Ball caster 019.201 & U-Profile 110	1000x500	110	32
KRT/019.201/T50/500x800/110/Vz	Ball caster table 500x800, Division 50, galvanized with Ball caster 019.201 & U-Profile 110	500x750	110	126
KRT/019.201/T75/500x800/110/Vz	Ball caster table 500x800, Division 75, galvanized with Ball caster 019.201 & U-Profile 110	500x750	110	60
KRT/019.201/T100/500x800/110/Nz	Ball caster table 500x800, Division 100, galvanized with Ball caster 019.201 & U-Profile 110	500x750	110	40



Schulz Stanztechnik GmbH
 Kruppstraße 12
 D 58553 Halver

Phone: +49 2353 903154
 Fax: +49 2353 903156
 info@schulz-stanztechnik.de

Ball caster / ball transfer units tables

Designation	Description / Dimensioning	Tablesize	Height U-Profile	Amount Ball caster
KRT/019.201/T125/500x800/110/Nz	Ball caster table 500x800, Division 125, galvanized with Ball caster 019.201 & U-Profile110	500x750	110	24
KRT/019.201/T50/1000x800/110/Nz	Ball caster table 1000x800, Division 50, galvanized with Ball caster 019.201 & U-Profile110	1000x750	110	266
KRT/019.201/T75/1000x800/110/Nz	Ball caster table 1000x800, Division 75, galvanized with Ball caster 019.201 & U-Profile110	1000x750	110	130
KRT/019.201/T100/1000x800/110/Nz	Ball caster table 1000x800, Division 100, galvanized with Ball caster 019.201 & U-Profile110	1000x750	110	80
KRT/019.201/T125/1000x800/110/Nz	Ball caster table 1000x800, Division 125, galvanized with Ball caster 019.201 & U-Profile110	1000x750	110	48
KRT/019.201/T50/500x950/110/Vz	Ball caster table 500x950, Division 50, galvanized with Ball caster 019.201 & U-Profile110	500x900	110	153
KRT/019.201/T75/500x950/110/Vz	Ball caster table 500x950, Division 75, galvanized with Ball caster 019.201 & U-Profile110	500x900	110	84
KRT/019.201/T100/500x950/110/Vz	Ball caster table 500x950, Division 100, galvanized with Ball caster 019.201 & U-Profile110	500x900	110	45
KRT/019.201/T125/500x950/110/Vz	Ball caster table 500x950, Division 125, galvanized with Ball caster 019.201 & U-Profile110	500x900	110	28
KRT/019.201/T50/1000x950/110/Vz	Ball caster table 1000x950, Division 50, galvanized with Ball caster 019.201 & U-Profile110	1000x900	110	323
KRT/019.201/T75/1000x950/110/Vz	Ball caster table 1000x950, Division 75, galvanized with Ball caster 019.201 & U-Profile110	1000x900	110	168
KRT/019.201/T100/1000x950/110/Vz	Ball caster table 1000x950, Division 100, galvanized with Ball caster 019.201 & U-Profile110	1000x900	110	90
KRT/019.201/T125/1000x950/110/Vz	Ball caster table 1000x950, Division 125, galvanized with Ball caster 019.201 & U-Profile110	1000x900	110	56