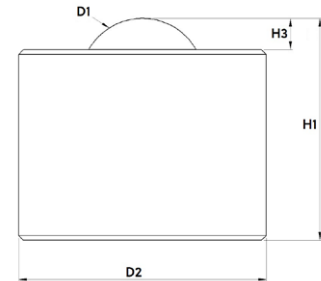
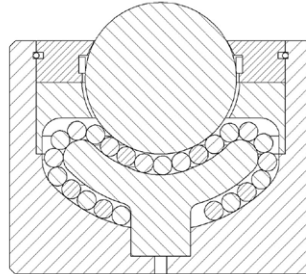


## Heavy-duty ball caster without collar



Designation	Material of bearing ball	Dimensioning				Sealing felt	Load bearing capacity (kg)
		Ø D1 (mm)	Ø D2 (mm)	H1 (mm)	H3 (mm)		
Tolerances	-	-	+/- 0.1	+/- 0.1	+/- 0.1	-	-
<b>Heavy-duty ball caster without collar, gunmetal-finished</b>							
025.503	<b>Tool steel</b>	25.400	44.5	41.4	5.6	ja	150
025.503b		25.400	50.8	44.7	6.1	ja	350
038.503		38.100	60	61.5	13	ja	1.000
050.503		50.800	101.6	98.4	14.3	ja	2.000
076.503		76.200	160	145	21	ja	4.500

### Design and construction

This Schulz ball caster / ball transfer unit consists of a casing, a top cover and a bearing cap as solid turned parts, a bearing ball and several support balls.

### Dimensions

The spacing is calculated by dividing the shortest edge length of the object to be transported by 3.5.

### Materials

<b>Casing:</b>	Steel galvanized, Stainless Steel (tempered)
<b>Top cover:</b>	Steel galvanized, Stainless Steel
<b>Support balls:</b>	Tool steel (tempered), Stainless steel (tempered)
<b>Bearing ball:</b>	Tool steel (tempered), Stainless steel (tempered), Plastic

### Operational conditions

Temperature range from -30°C to +100°C  
Conveyance velocity of up to 2,0 m/s.  
Dynamic load rating up to max. 2.000 kg.