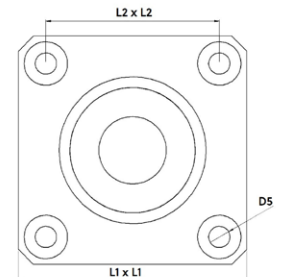
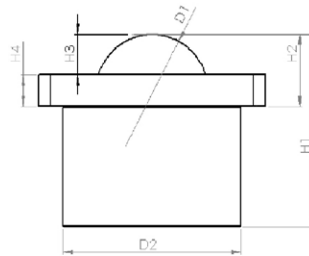
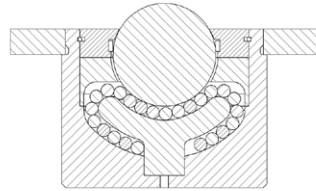


## Heavy-duty ball caster with head flange



Designation	Material of bearing ball	Dimensioning									Sealing felt	Load bearing capacity (kg)
		Ø D1 (mm)	Ø D2 (mm)	H1 (mm)	H2 (mm)	H3 (mm)	H4 (mm)	L1 x L2 (mm)	L2 x L2 (mm)	Ø D5 (mm)		
Tolerances	-	-	+/- 0.1	+/- 0.2	+/- 0.1	+/- 0.1	+/- 0.2	-	-	-	-	-
<b>Solid ball caster / ball transfer units with head flange, gunmetal-finished</b>												
012.500	Tool steel	12.7	23.8	24.9	11.2	3.5	3.2	dm 44.5	dm 34.8	3.6	no	80
025.500		25.4	44.5	41.4	10.6	5.6	5.0	57.2	44.5	5.5	yes	150
025.500b		25.4	50.8	45.5	13.1	6.1	7.0	76.2	57.9	6.6	yes	350
038.500		38.1	60.0	61.5	23.0	13.0	10.0	76.2	57.9	6.6	yes	1.000
050.500		50.8	101.6	98.4	33.3	14.3	19.0	127.0	101.6	11.0	yes	2.000
076.500		76.2	160	145	36	21	15	175.0	145.0	12.1	yes	4.500

### Design and construction

This Schulz ball caster / ball transfer unit consists of a casing, a top cover and a bearing cap as solid turned parts, a head flange, a bearing ball and several support balls.

### Dimensions

The spacing is calculated by dividing the shortest edge length of the object to be transported by 3.5.

### Materials

<b>Casing:</b>	Steel gunmetal-finished, black
<b>Deckel:</b>	Steel gunmetal-finished, black
<b>Tragpiltz:</b>	Stahl tempered
<b>Support balls:</b>	Tool steel (tempered), Stainless steel (tempered)
<b>Bearing ball:</b>	Tool steel (tempered), Stainless steel (tempered)

### Operational conditions

Temperature range from -30°C to +100°C  
Conveyance velocity of up to 2,0 m/s.  
Dynamic load rating up to max. 2.000 kg.