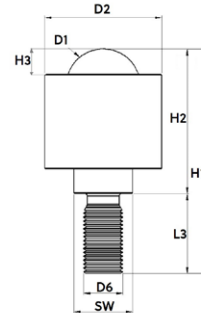
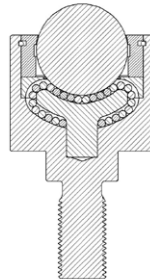


Heavy-duty ball caster with threaded pin



| Designation | Material of bearing ball | Dimensioning | | | | | | | | Sealing felt | Load bearing capacity (kg) |
|--|--------------------------|--------------|-----------|---------|---------|---------|---------|-----------|---------|--------------|----------------------------|
| | | Ø D1 (mm) | Ø D2 (mm) | H1 (mm) | H2 (mm) | H3 (mm) | SW (mm) | Ø D6 (mm) | L3 (mm) | | |
| Tolerances | - | - | +/- 0.1 | +/- 0.1 | +/- 0.1 | +/- 0.2 | - | - | - | - | - |
| Solid ball caster / ball transfer units without flange and with threaded pin, gunmetal-finished | | | | | | | | | | | |
| 025.504 | Tool steel | 25.400 | 44.5 | 72.4 | 48.3 | 5.6 | 19 | M12 | 24.1 | yes | 150 |
| 025.504b | | 25.400 | 50.8 | 77.0 | 51.3 | 6.1 | 19 | M12 | 25.7 | yes | 350 |
| 038.504 | | 38.100 | 60.0 | 114.3 | 73.5 | 13.0 | 30 | M20 | 40.8 | yes | 1.000 |
| 050.504 | | 50.800 | 101.6 | 163.3 | 113.4 | 14.3 | 36 | M24 | 50 | yes | 2.000 |

Design and construction

This Schulz ball caster / ball transfer unit consists of a casing with threaded pin, a top cover and a bearing cap as solid turned parts, a bearing ball and several support balls.

Dimensions

The spacing is calculated by dividing the shortest edge length of the object to be transported by 3.5.

Materials

| | |
|-----------------------|---|
| Casing: | gunmetal-finished steel, black |
| Top cover: | gunmetal-finished steel, black |
| Bearing cap: | tempered steel |
| Support balls: | Tool steel (tempered), Stainless steel (tempered) |
| Bearing ball: | Tool steel (tempered), Stainless steel (tempered) |

Operational conditions

Temperature range from -30°C to +100°C
Conveyance velocity of up to 2,0 m/s.
Dynamic load rating up to max. 2.000 kg.