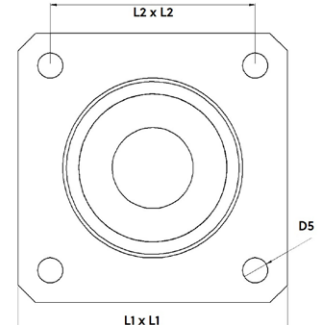
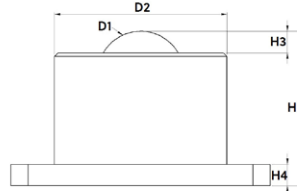
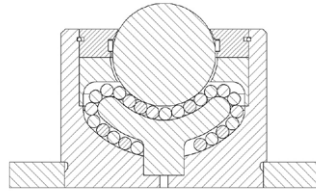


## Heavy-duty ball caster with base flange



Designation	Material of bearing ball	Dimensioning								Sealing felt	Load bearing capacity (kg)
		Ø D1 (mm)	Ø D2 (mm)	H1 (mm)	H3 (mm)	H4 (mm)	L1 x L2 (mm)	L2 x L2 (mm)	Ø D5 (mm)		
Tolerances	-	-	+/- 0.1	+/- 0.1	+/- 0.1	+/- 0.2	-	-	-	-	-
<b>Solid ball caster / ball transfer units with base flange, gunmetal-finished</b>											
012.501	Tool steel	12.7	23.8	22.6	3.5	3.2	dm 44.5	dm 34.8	3.6	no	80
025.501		25.4	44.5	41.4	5.6	5.0	57.2	44.5	5.5	yes	150
025.501b		25.4	50.8	45.5	6.1	7.0	76.2	57.9	6.6	yes	350
038.501		38.1	60.0	61.5	13.0	10.0	76.2	57.9	6.6	yes	1.000
050.501		50.8	101.6	98.4	14.3	19.0	127.0	101.6	11.0	yes	2.000
076.501		76.2	160	145	21	15	175.0	145.0	12.1	yes	4.500

### Design and construction

This Schulz ball caster / ball transfer unit consists of a casing, a top cover and a bearing cap as solid turned parts, a base flange, a bearing ball and several support balls.

### Dimensions

The spacing is calculated by dividing the shortest edge length of the object to be transported by 3.5.

### Materials

<b>Casing:</b>	gunmetal-finished steel, black
<b>Top cover:</b>	gunmetal-finished steel, black
<b>Bearing cap:</b>	tempered steel
<b>Support balls:</b>	Tool steel (tempered), Stainless steel (tempered)
<b>Bearing ball:</b>	Tool steel (tempered), Stainless steel (tempered)

### Operational conditions

Temperature range from -30°C to +100°C  
Conveyance velocity of up to 2,0 m/s.  
Dynamic load rating up to max. 2.000 kg.