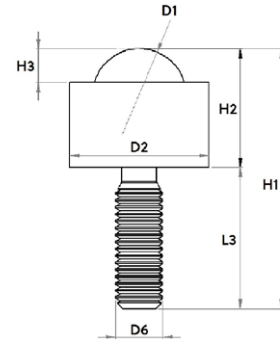
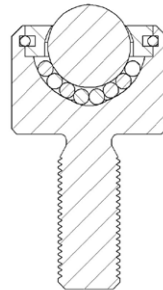


Solid ball caster without collar, with threaded pin



Designation	Material of bearing ball	Dimensioning							Sealing felt	Load bearing capacity (kg)
		Ø D1 (mm)	Ø D2 (mm)	H1 (mm)	H2 (mm)	H3 (mm)	Ø D6	L3 (mm)		
Tolerances	-	-	-	+/- 0.1	+/- 0.1	+/- 0.1	+/- 0.2	+/- 0.5	-	-
Solid ball caster / ball transfer units without collar, with threaded pin, galvanised										
006.400	Tool steel	6.350	13	25.5	10.5	2	M6	15	no	30
012.400		12.700	20.6	35.8	19.6	3.5	M8	16.2	no	80
015.400		15.875	24	46.1	21	6	M8	25	no	100
030.400		30.000	45	62	37	5	M12	25	yes	350
012.410	Plastic	12.700	20.6	35.8	19.6	3.5	M8	16.2	no	50
015.410		15.875	24	46.1	21	6	M8	25	no	50
015.420	Stainless steel	15.875	24	46.1	21	6	M8	25	no	100
Solid stainless steel ball caster / ball transfer units without collar, with threaded pin										
006.430	Stainless steel	6.350	13	25.5	10.5	2	M6	15	no	30
008.430		8.000	15	27.5	12.5	2	M6	15	no	50
015.430		15.875	24	41	21	6	M10	20	no	100

Design and construction

This Schulz ball caster consists of a casing with threaded pin and a top cover as solid turned parts, a bearing ball and several support balls.

Dimensions

The spacing is calculated by dividing the shortest edge length of the object to be transported by 3.5.

Materials

Casing:	galvanised steel tempered, Stainless steel tempered
Deckel:	galvanised steel, Stainless steel
Support balls:	Tool steel (tempered), Stainless steel (tempered)
Bearing ball:	Tool steel (tempered), Stainless steel (tempered), Plastic

Operational conditions

Temperature range from -30°C to +100°C (up +30°C with plastic bearing ball)
Conveyance velocity of up to 1,5 m/s.
Dynamic load rating up to max. 350 kg.