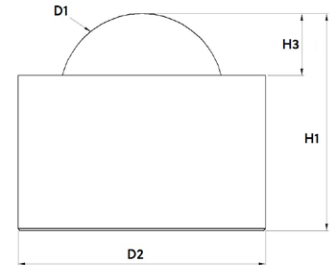
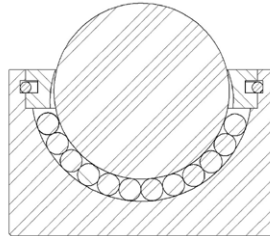


Solid ball caster without collar



Designation	Material of bearing ball	Dimensioning				Sealing felt	Load bearing capacity (kg)
		Ø D1 (mm)	Ø D2 (mm)	H1 (mm)	H3 (mm)		
Tolerances	-	-	+/- 0.1	+/- 0.1	+/- 0.1	-	-
Solid ball caster / ball transfer units without collar, galvanised							
006.300	Tool steel	6.350	13	10.5	2	no	15
008.300		8.000	15	12.5	2	no	50
012.300		12.700	20.6	16.6	3.5	no	80
015.300		15.875	24	21	6	no	100
025.300*		25.400	35	35	7	no	125
045.300		44.450	62	53	15.6	yes	800
070.300*		70.000	130	103	23	yes	1.750
090.300*		90.000	145	114	24	yes	2.500
006.310	Plastic	6.350	13	10.5	2	no	10
008.310		8.000	15	12.5	2	no	25
012.310		12.700	20.6	16.6	3.5	no	40
015.310		15.875	24	21	6	no	50
008.320	Stainless steel	8.000	13	10.5	2	no	15
012.320		12.700	20.6	19.6	3.5	no	80
015.320		15.875	24	21	6	no	100
025.320		25.400	35	35	7	no	125

* Screwed-down top-cover 6x M6x30
012.xxx surface black, gunmetal-finished

Solid ball caster without collar



Design and construction

This Schulz ball caster / ball transfer unit consists of a casing and a top cover as solid turned parts, a bearing ball and several support balls.

Dimensions

The spacing is calculated by dividing the shortest edge length of the object to be transported by 3.5.

Materials

Casing:	tempered, galvanised steel, tempered stainless steel
Lid:	galvanised steel, stainless steel
Support balls:	tool steel (tempered), stainless steel (tempered)
Bearing ball:	tool steel (tempered), stainless steel (tempered), plastic

Operational conditions

Temperature range from -30°C to +100°C (up to +30°C with plastic bearing ball)

Conveyance velocity of up to 1.5 m/s.

Dynamic load rating up to max. 2.500 kg.