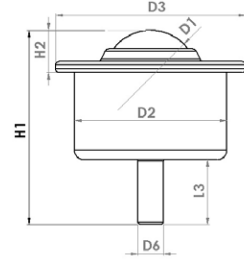
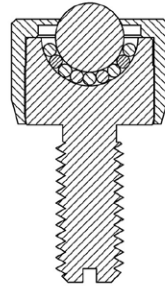


Solid ball caster MINI without collar, with threaded pin & cylindrical head



Designation	Material of bearing ball	Dimensioning							Sealing felt	Load bearing capacity (kg)
		Ø D1 (mm)	Ø D2 (mm)	H1 (mm)	H2 (mm)	H3 (mm)	Ø D6	L3 (mm)		
Tolerances	-	-	-	+/- 0.1	+/- 0.1	+/- 0.1	+/- 0.2	+/- 0.5	-	-
Solid ball caster MINI without collar, with threaded pin & cylindrical head, galvanized										
005.401	Tool steel	4.800	13	24	9	1	M6	15	no	10
006.401		6.400	17	26	11	2	M6	15	no	20
008.401		7.900	18	32	14	2	M8	18	no	30
009.401		9.600	23	40	20	2	M8	20	no	40
012.401		12.700	28	48	25	3.5	M8	23	no	50
Solid ball caster MINI without collar, with threaded pin & cylindrical head, Stainless steel										
005.421	Stainless steel	4.800	13	24	9	1	M6	15	no	10
006.421		6.400	17	26	11	2	M6	15	no	20
008.421		7.900	18	32	14	2	M8	18	no	30
009.421		9.600	23	40	20	2	M8	20	no	40
012.421		12.700	28	48	25	3.5	M8	23	no	50
Solid ball caster MINI without collar, with threaded pin & cylindrical head, complete stainless steel										
005.431	Stainless steel	4.800	13	24	9	1	M6	15	no	10
006.431		6.400	17	26	11	2	M6	15	no	20
008.431		7.900	18	32	14	2	M8	18	no	30
009.431		9.600	23	40	20	2	M8	20	no	40
012.431		12.700	28	48	25	3.5	M8	23	no	50

Solid ball caster MINI without collar, with threaded pin & cylindrical head



Design and construction

This Schulz ball caster consists of a casing with threaded pin and a top cover as solid turned part, a bearing ball and several support balls.

Dimensions

The spacing is calculated by dividing the shortest edge length of the object to be transported by 3.5.

Materials

Casing:	galvanised steel tempered
Deckel:	galvanised steel, Stainless steel
Support balls:	Tool steel (tempered), Stainless steel (tempered)
Bearing ball:	Tool steel (tempered), Stainless steel (tempered)

Operational conditions

Temperature range from -30°C to +70°C

Conveyance velocity of up to 1,5 m/s.

Dynamic load rating up to max. 50 kg.

The MINI ball roller is suitable for:

- Use in measuring instruments
- Transport of material in CLEAN rooms
- Guides for small linear bearings