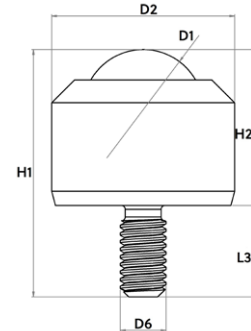
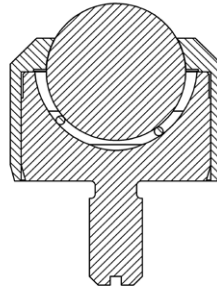


Solid ball caster MINI without collar, with threaded pin & aluminum cover with conical head



Designation	Material of bearing ball	Dimensioning							Sealing felt	Load bearing capacity (kg)
		Ø D1 (mm)	Ø D2 (mm)	H1 (mm)	H2 (mm)	H3 (mm)	Ø D6	L3 (mm)		
Tolerances	-	-	-	+/- 0.1	+/- 0.1	+/- 0.1	+/- 0.2	+/- 0.5	-	-
Solid ball caster MINI without collar, with threaded pin & aluminum cover with conical head										
005.422	Stainless steel	4.800	8	8.5	6	1	M2	2.5	no	5
006.422		6.400	13	16.5	10.5	2	M3	6	no	10
008.422		7.900	15	20.5	12.5	2.5	M4	8	no	15
015.422		15.875	24	32.5	20.5	4	M6	12	no	70

Design and construction

This Schulz ball caster consists of a casing with threaded pin and a top cover as solid turned part, a bearing ball and several support balls.

Dimensions

The spacing is calculated by dividing the shortest edge length of the object to be transported by 3.5.

Materials

Casing:	galvanised steel tempered
Deckel:	aluminum
Support balls:	Stainless steel (tempered)
Bearing ball:	Stainless steel (tempered)

Operational conditions

Temperature range from -30°C to +70°C
Conveyance velocity of up to 1,5 m/s.
Dynamic load rating up to max. 70 kg.

The MINI ball roller is suitable for:

- Use in measuring instruments
- transport of material in CLEAN rooms
- Guides for small linear bearings