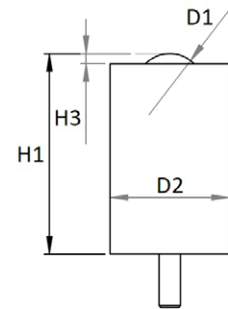
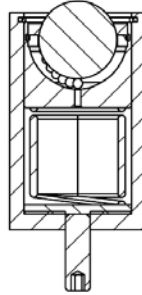
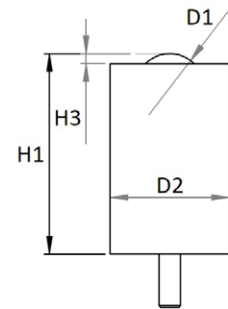
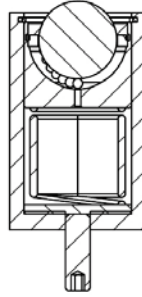


Solid ball caster without flange and suspension



Designation	Material of Bearingball	Dimensioning					Sealing Felt	Load capacity of the ball transfer unit (kg) Attention higher than spring force!
		Ø D1 (mm)	Ø D2 (mm)	Ø H1 (mm)	H3 (mm)	F1 (N) adjustable		
Tolerances	-	-	+/- 0.1	+/- 0.2	+/- 0.1	-	-	-
Solid ball caster / ball transfer units with head flange and suspension, gunmetal-finished – low Suspension (FS)								
012.703-FS	Tool Steel	12.70	25.40	32.10	1.70	100-120	no	80
025.703-FS		25.40	44.50	71.80	3.8	96-139	no	125
038.703-FS		38.10	70.00	121.00	7.00	340-420	no	350
050.703-FS		on request					yes	-
Solid ball caster / ball transfer units with head flange and suspension, gunmetal-finished – medium Suspension (FM)								
012.703-FM	Tool Steel	12.70	25.40	32.10	1.70	120-140	no	80
025.703-FM		25.40	44.50	71.80	3.8	187-283	no	125
038.703-FM		38.10	70.00	121.00	7.00	650-790	no	350
050.703-FM		on request					yes	-
Solid ball caster / ball transfer units with head flange and suspension, gunmetal-finished– high Suspension (FL)								
012.703-FL	Tool Steel	12.70	25.40	32.10	1.70	140-160	no	80
025.703-FL		25.40	44.50	71.80	3.8	298-485	no	125
038.703-FL		38.10	70.00	121.00	7.00	720-900	no	350
050.703-FL		on request					yes	-

Solid ball caster without flange and suspension



Design and construction

This Schulz ball caster / ball transfer unit consists of a casing, a top cover and a bearing cap as solid turned parts, a bearing ball and several support balls. To this ball caster is another casing which serves as a body for the spring. Prevent spring loaded ball casters Damage caused by shock loads.

Dimensions

The spacing is calculated by dividing the shortest edge length of the object to be transported by 3.5.

Materials

Casing Ball caster:	galvanized Steel (tempered)
Casing Spring:	Steel
Top Cover:	galvanized Steel
Ball socket:	Steel (tempered)
Support Balls:	Tool Steel (tempered), Stainless Steel (tempered)
Bearing Ball:	Tool Steel (tempered), Stainless Steel (tempered), Plastic
Spring:	1.4310 or 1.200

Operational conditions

Temperature range from -30°C to +100°C (bis +30°C Plastic)
Conveyance velocity of up to 1,5 m/s.
Dynamic load rating up to max. 2.500 kg.

* depend on the adjustable force of suspension F1