

## Plastic ball caster „BlueLine“ (for e.g. food industry)



### Design and construction

The Schulz ball caster „Blue-Line“ with a housing made of certified plastic and a gap-free, closed cover (without dirty edges), a plastic or stainless steel carrier ball and several support balls has been specially developed by us for use in the food industry. For this purpose they have the signal colour blue. The Schulz plastic ball caster „BlueLine“ is particularly easy to clean due to the new design with several dirt holes in the housing.

### Dimensions

The pitch is determined by dividing the shortest edge length of the conveyed material by 3.5.

### Materials

Housing, cover: certified POM plastic, signal colour blue for contact with food

Food Safe, EU Regulation 1935/2004, EU Regulation 10/2011

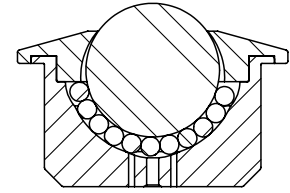
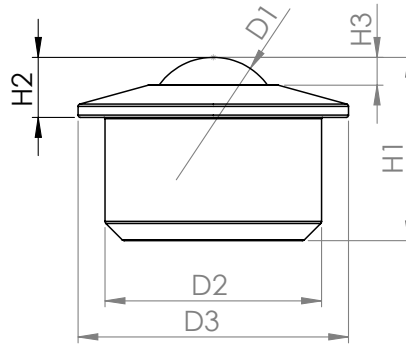
Support balls: Stainless steel (hardened)

Support ball: stainless steel (hardened), plastic

### Operational conditions

- Temperature range from -30°C to +50°C (up to +30°C with plastic bearing ball)
- Conveyance velocity of up to 1.5 m/s.
- Dynamic load rating up to max. 50 kg.

## Plastic ball caster „BlueLine“ (for e.g. food industry)



Designation	Material of bearing ball	Dimensioning						Sealing felt	Load bearing capacity (kg)
		Ø D1 (mm)	Ø D2 (mm)	Ø D3 (mm)	H1 (mm)	H2 (mm)	H3 (mm)		
Tolerances	-	-	+/- 0.1	+/- 0.1	+/- 0.1	+/- 0.1	-	-	-
Ball transfer unit solid with collar, housing and cover made of plastic (POM, certified raw material)									
015.122K	support ball POM, support balls made of stainless steel	15.875	24.0	31.0	20.5	9.5	4.5	no	20
022.120K		22.225	36.0	45.0	30.5	10.0	4.5	no	25
030.120K		30.000	45.0	55.0	37.0	14.0	5.5	no	35
045.120K		44.500	62.0	75.0	53.5	19.0	9.0	no	50
Ball transfer unit solid with collar, housing and cover made of plastic (POM, certified raw material)									
015.132K	Stainless steel support ball, stainless steel support balls	15.875	24.0	31.0	20.5	9.5	4.5	no	20
022.130K		22.225	36.0	45.0	30.5	10.0	4.5	no	25
030.130K		30.000	45.0	55.0	37.0	14.0	5.5	no	35
045.130K		44.500	62.0	75.0	53.5	19.0	9.0	no	50